

Seakeeper Ride | Boat, Knowledge, and Tools Requirements

Seakeeper Ride Boat, Knowledge, and Tools Requirements

Updated 07/05/2023

The most important consideration before installing Seakeeper Ride is ensuring that the boat is compatible with a currently available Seakeeper Ride system. **If the boat does not meet all of the requirements listed below, do not purchase or begin installing Seakeeper Ride.** Instead, see the FAQ's page and contact Seakeeper if you have additional questions regarding boat compatibility. Please keep in mind that Seakeeper is constantly expanding the applicability of Seakeeper Ride and will likely serve your hull type in the future. [Sign up here for updates.](#)

The installer of the Seakeeper Ride system must also have the necessary knowledge and tools before beginning. Refer to the following boat, knowledge, and tool requirements for a successful installation.

Boat Requirements

Hull Requirements:

- Flat Transom with Compatible Hull Shape*
- Physical Space on the Transom for Seakeeper Ride Controllers (See figure and table below)
- Hull Length Between 19-35 ft (See table below for correctly sizing the system)
- Planing Hull
- Stepped or Non-Stepped Hull
- Monohull
- Cruise Speed Greater than 20 mph
- Max Speed Less than 70 mph

- Fiberglass or Aluminum Construction

Electrical Requirements:

- Seakeeper Compatible Multifunction Display (MFD)
- GPS with NMEA 2000 Network Backbone
- 12 Volt DC Power Supply
- Battery Isolation Switch
- Key Switch

*See [Section 5 – Identify Installation Location](#) of the Mechanical Installation Manual for more information and figures on how Seakeeper Ride must be mounted and if it is compatible with a boat's hull shape.



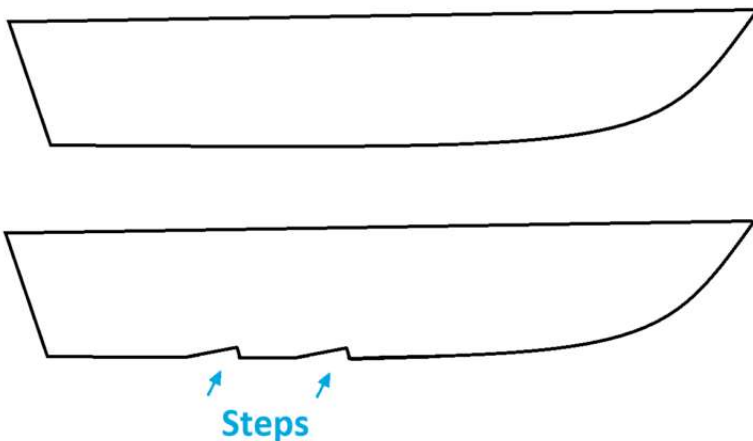
The width, W, of the Controller is dependent on the Controller size.

Non-Stepped Boat Length (ft)	19-26	27-30	31-35
------------------------------	-------	-------	-------

**Stepped Boat Length (ft)	19-26	27-30	31-35
Part Number	90685	90686	90687
Width (mm)	450	525	600
Width (in.)	19.0	22.0	24.9

Refer to the [Controller Footprint and Envelope](#) section for higher detail dimensions.

For the purposes of Seakeeper Ride, stepped hulls are those which have a discontinuity in the planing surface that runs transverse for the majority of the beam of the boat.



Side view of non-stepped hull *Top*, and stepped hull *Bottom*

Knowledge & Skills

- Grinding, sanding, and drilling gel coat and fiberglass
- Application of methyl methacrylate adhesives
- Marine electronics wiring
- Ability to inspect boat structure for strength, fitment, and potential obstructions

Tools

- Approved Methyl Methacrylate Adhesive (MMA) (See list below)
- MMA Dispense Gun

- Marine Adhesive Sealant (3M 5200 or similar)
- Torque Wrench
- Digital Protractor
- Drill
- Drill Bits (3/32, 1/8, 9/64, 1/4, & 7/8 in. required)
- Phillips Head Screwdriver
- DA Sander
- Oscillating Tool or Hacksaw
- Hex Head Sockets (2.5, 4, 5 & 6 mm required)
- Hex Wrenches (Allen Keys) (2.5, 5 & 6 mm required)
- Adjustable Wrench
- Squeegee, Putty Knife, or Tongue Depressor
- 6-12 in. Straight Edge
- 3 ft Straight Edge
- Masking Tape
- 60 Grit Sandpaper
- Thread Locking Sealant (Permatex 24010 is recommended)
- Acetone or Denatured Alcohol
- Clean Gloves (recommended)
- Paper Towels

- Marker, Pen, or Pencil
- Crimpers
- Wire Strippers
- Terminals for Cable-to-Battery Connection
- Work Light or Flashlight
- Fish Tape or Electricians Snake
- 25 Amp Circuit Breaker or Fuse (optional)
- Heat Gun
- 8-Gauge Grounding Wire
- Adhesive-Lined Heat Shrink
- 12-Gauge Power Wire Copper Tinned (optional)

Methyl Methacrylate Adhesive (MMA)

Approved MMA's and working times:

- Plexus MA590 (90 minute)
- SciGrip SG300-40 (40 minute)
- Partite 7425 (25 minute)

MMA, dispense guns, and solvent wipes can be purchased from [FibreGlast](#).

Quantity:

Controller Size	Adhesive Quantity
450 mm	2 x 400 ml cartridges or 2 x 490 ml cartridges (1 per Controller)

525 mm	3 x 400 ml cartridges or 2 x 490 ml cartridges (1 ½ x 400 ml or 1 x 490 ml per Controller)
600 mm	3 x 400 ml cartridges or 2 x 490 ml cartridges (1 ½ x 400 ml or 1 x 490 ml per Controller)
